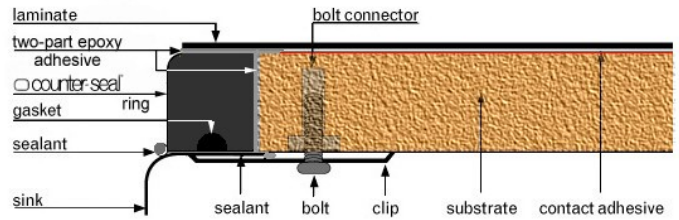


Counter-Seal® Ring in-Board with Faucet Deck

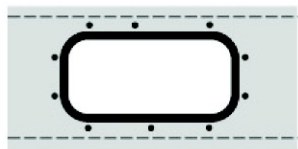
Finished Example

NOTE:

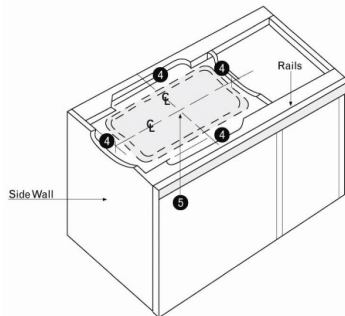
Before commencing, confirm match of Counter-Seal® ring in-board with sink.



1. Measure desired countertop depth.
2. Counter-Seal® ring in-board may need to be trimmed to match desired countertop depth. Part is 25-1/2" front to back; if applying a front edge, trim depth of part from the front by thickness of edging. Part is designed to be 3-1/2" from inside of ring to outside of front edge.
3. Center Counter-Seal® ring in-board in sink cavity (loosely). Mark cabinet rails front and back and sidewalls of cabinets to prepare room for sink and fastening clips.



4. Remove Counter-Seal® ring in-board, and if required, cut out cabinet rails and cabinet sidewalls where marked.



8. From the underside, trace out the Counter-Seal® ring perimeter with a pencil.
9. Remove laminate from sink area, tip over and, following pencil marks, tape off outside perimeter of sink cut-out area using 3/4" wide masking tape.
10. Tape over top of Counter-Seal® ring using 3/4" masking tape.
11. Apply contact adhesive to substrate surface and bottom side of laminate. Once contact adhesive has tacked, remove tape from both surfaces; clean top surface of ring with denatured alcohol or methyl alcohol (methyl hydrate). **DO NOT USE ANY OTHER CLEANERS.**

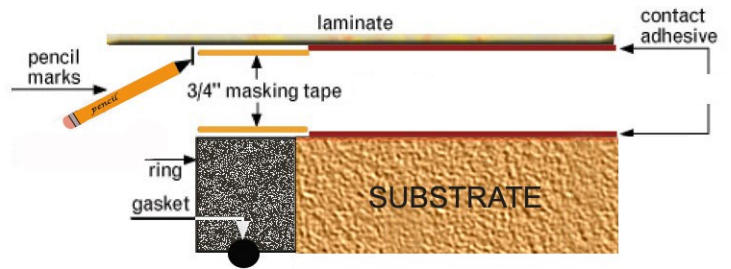
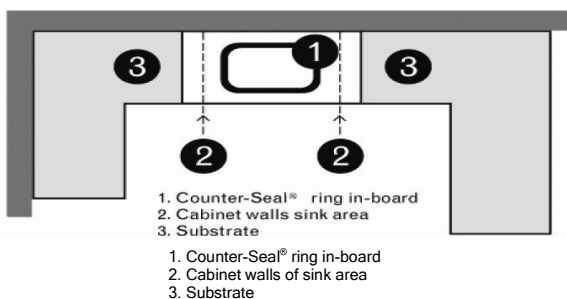


Illustration of Steps 8 through 11

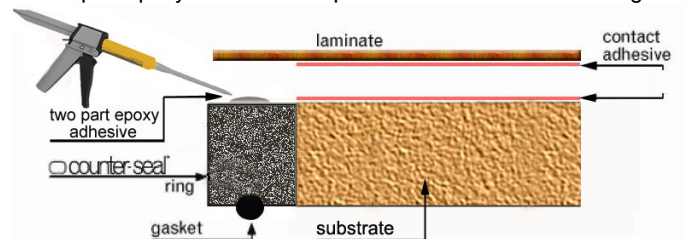
Substrate Assembly

5. First center Counter-Seal® ring-in-board over sink area. Affix balance of countertop substrate to the right and left of the Counter-Seal® ring in-board.



6. Finish front edge as desired.
7. Dry fit laminate surface to substrate and over Counter-Seal® ring.

12. **WARNING:** Before continuing, have all materials at hand as work life of epoxy adhesive is only a few minutes (refer to instructions on two-part epoxy adhesive). Note: additional epoxy adhesive cannot be added to itself - application must be made in one pass. When ready to proceed, apply a generous amount of two-part epoxy adhesive to topside of the Counter-Seal® ring



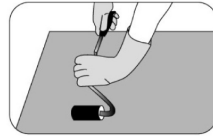
NOTE:

Two-part epoxy adhesive supplied by Counter-Seal Corp. is designed for use with any laminate color or brand.

13. Set laminate in place, using standard laminating procedures.

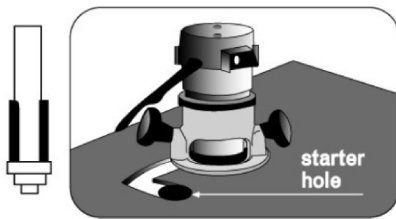
14. Roller surface up to Counter-Seal® ring.

ROLLER COUNTER-SEAL® RING GENTLY.



15. Place approximately 4 to 5 lbs on top of sink area surface until two-part epoxy adhesive cures (approximately 30 minutes at shop temperature of 70-75°F [20-23°C]).

16. Using a flush trim bit, router sink cavity (Counter-Seal® ring is the template). Then router off excess front edge surface material.



17. When profiling Counter-Seal® ring, choose a 1/4" or less router bit profile as the ring is 1/2" wide; 1/4" thickness of the Counter-Seal® ring must be maintained so that the laminate seal is not compromised. Some common profiles are round over, ogee, bevel or flush.



18. **HAND SAND** the Counter-Seal® ring adhering to solid surface fabricating standards and finish with Scotch-Brite®.



Sink Installation Instructions

1. Position sink under Counter-Seal® ring. Some installers find it helpful to bridge sink cavity with a piece of wood and a bungee cord to hold sink up under Counter-Seal® ring so sink can be maneuvered with ease.

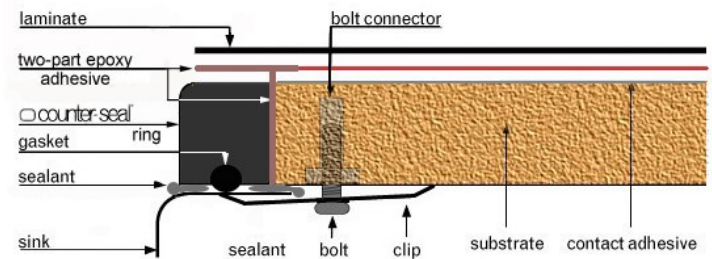
2. Apply a generous amount of **SANITARY silicone** (mildew resistant), or for superior performance apply 1100 Bostik® Neutral Cure Sealant, to the topside of the sink flange. Ensure that the sealant is applied as one continual bead.

NOTE: **DO NOT RELY ON SEALANT ALONE.**
The CounterSeal® sink-mounting hardware supplied is the only approved method of affixing the sink to the countertop.

3. Fasten bolts and clips loosely **BY HAND** into bolt connectors, starting at the corners; adjust sink to fit Counter-Seal® ring. Before tightening bolts, apply **sanitary silicone** (or Bostik® sealant) to inside of sink between bottom of Counter-Seal® ring and sink flange; ensure sealant penetrates into crack leaving no voids.

NOTE: Ensure bolts are not cross threaded.
Finish tightening with screwdriver until clips are compressed tight against countertop.
DO NOT USE POWER TOOLS!

If cabinet design or dimensions restrict the use of all clips, affix sink rigidly in those restricted areas with wood blocking or other suitable method.



4. For a clean finished appearance, use denatured alcohol or methyl alcohol to thoroughly clean away excess sealant **before** it hardens (if silicone residue remains, finish cleaning sink with mineral spirits after silicone has dried). Finish sink plumbing as usual.
5. Drill faucet holes with hole saw bit or router.
6. Install faucet per manufacturer's instructions.
7. Add additional support to front and rear cabinet rails if required.

If applicable:

8. Drill water dispenser (or other accessory dispenser) holes with hole saw bit or router.
9. **Waterproof holes** to protect countertop substrate from moisture.
10. Install accessory dispenser ensuring gaskets and sealant are in place to waterproof area.



WARNING:
Failure to follow instructions may cause countertop damage and voids any warranty expressed or implied.